

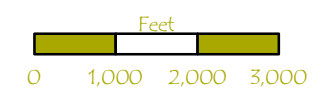
# Turtle Creek Greenway Plan

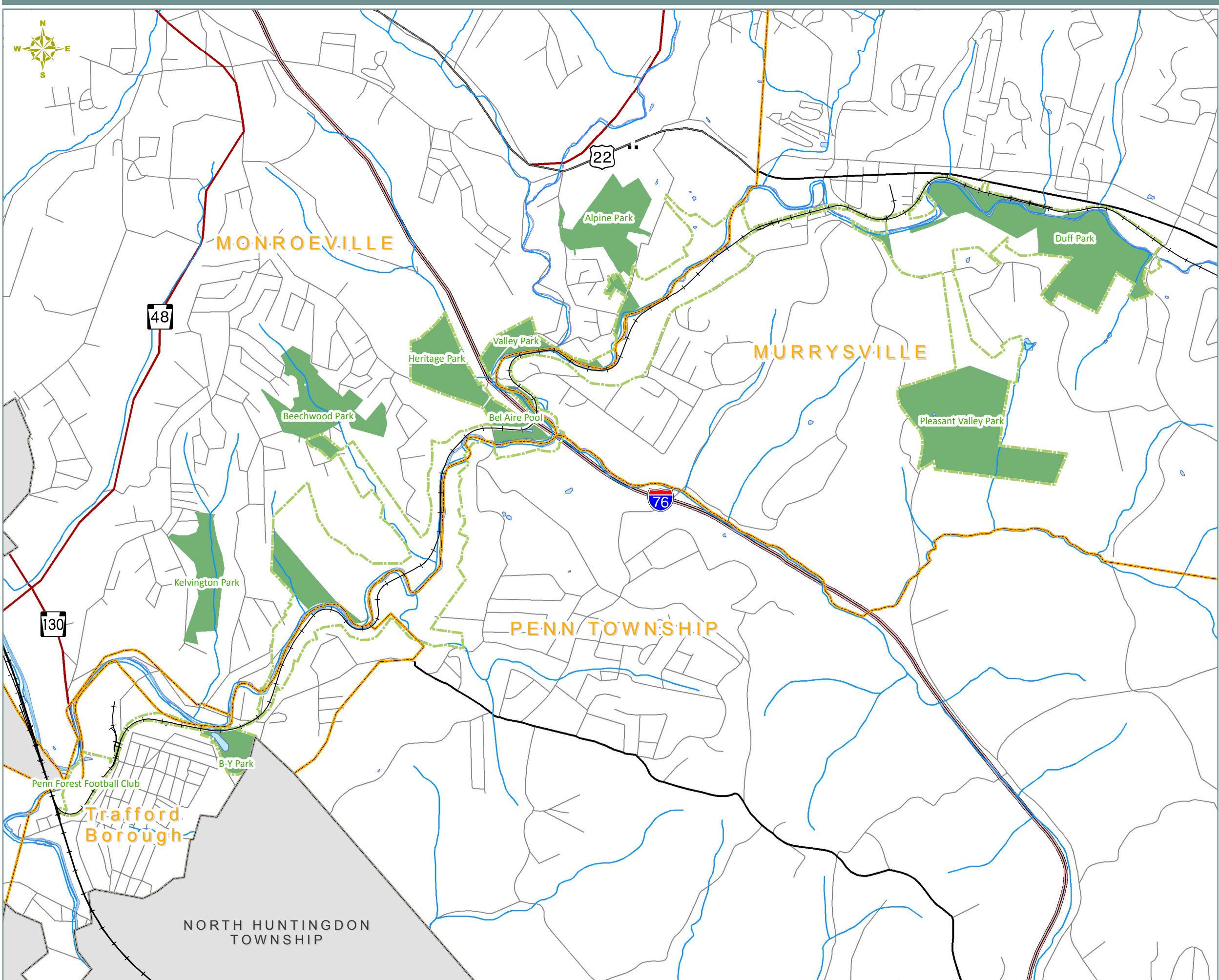
## Map 2.1 > Land Use

### Legend

- Municipal Boundary
- Project Area Municipality
- Project Boundary
- NWI Wetland
- Waterway
- Floodplain
- Existing Land Use Category**
- Agriculture
- Commercial
- Industrial
- Public Park
- Right-of-Way
- Utility
- Single Family Residential
- Undeveloped Land/Open Space
- Agricultural Security Area (ASA)
- Road
- I-76/PA Turnpike
- US Route
- Major State Route
- Railroad

Data used is courtesy of PASDA, Allegheny County, Westmoreland County and PennDOT.





# Turtle Creek Greenway Plan

## Map 2.2 > Parks and Recreation

**Legend**

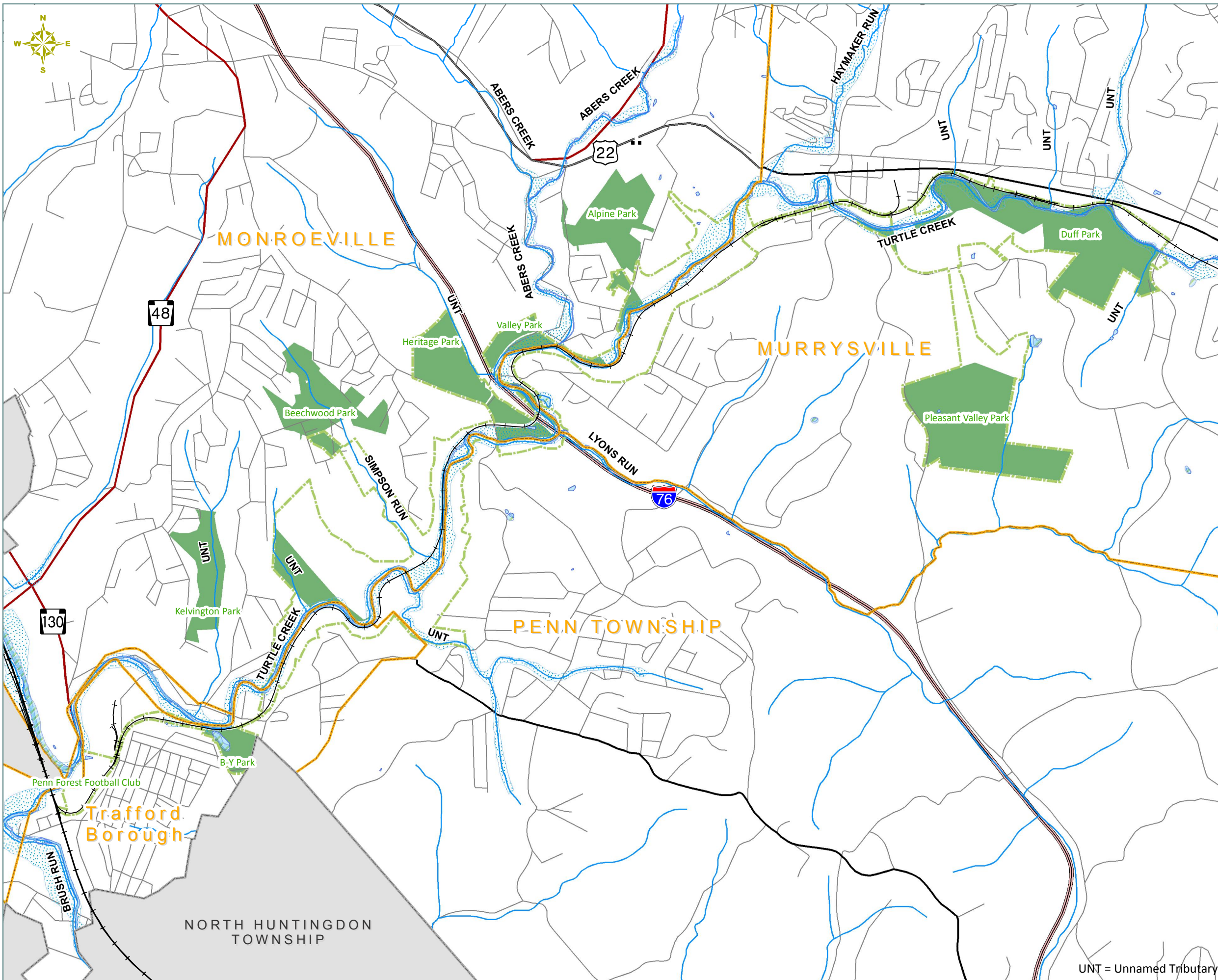
- Municipal Boundary
- Project Area Municipality
- Project Boundary
- Waterway
- Public Park
- Road
- I-76/PA Turnpike
- US Route
- Major State Route
- Railroad

Data used is courtesy of PASDA, Allegheny County, Westmoreland County and PennDOT.

0 1,000 2,000 3,000 Feet

# Turtle Creek Greenway Plan

## Map 2.3 > Water Resources



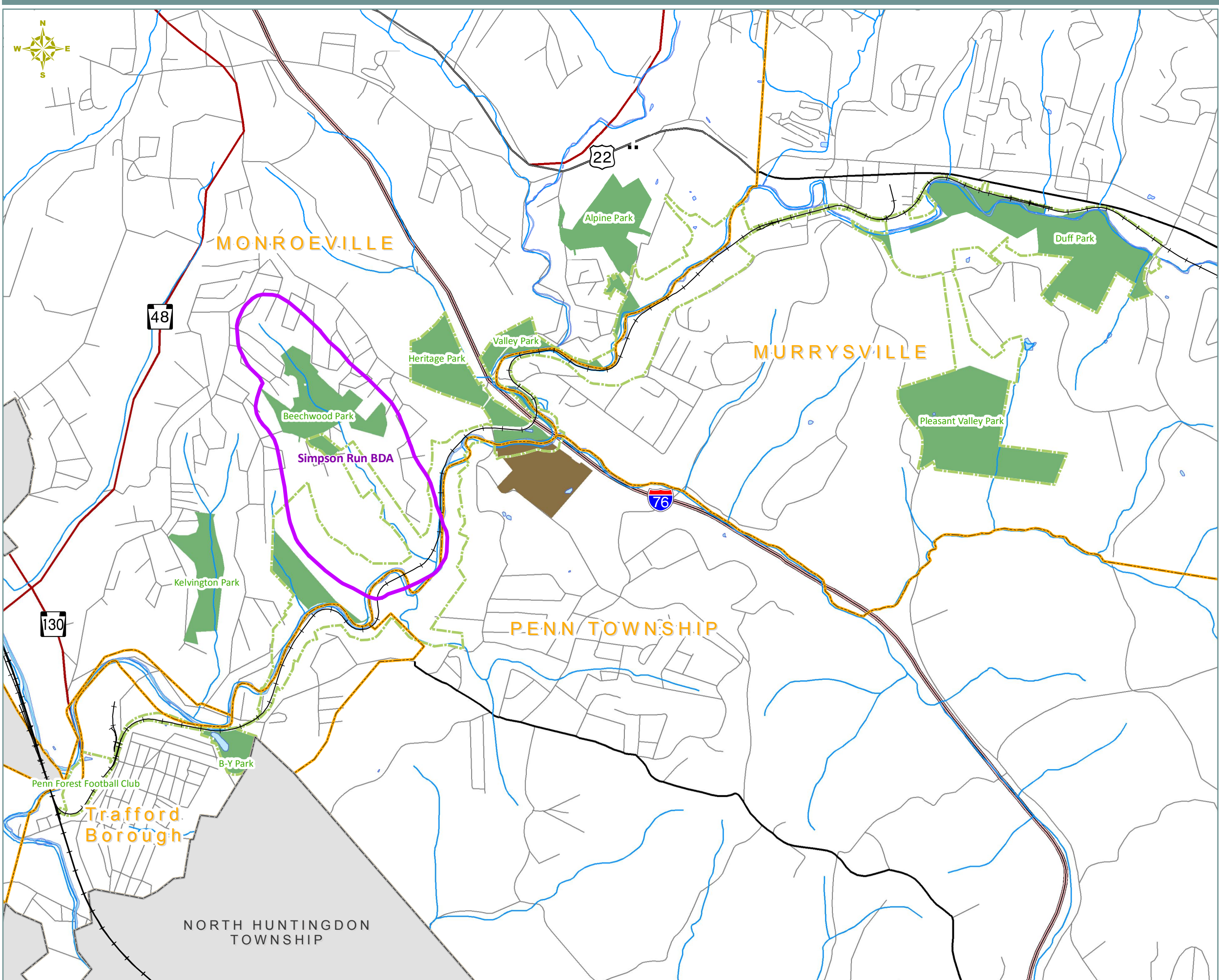
### Legend

- Municipal Boundary
- Project Area Municipality
- Project Boundary
- NWI Wetland
- Waterway
- Floodplain
- Public Park
- Road
- I-76/PA Turnpike
- US Route
- Major State Route
- Railroad

Data used is courtesy of PASDA, Allegheny County, Westmoreland County and PennDOT.



UNT = Unnamed Tributary



# Turtle Creek Greenway Plan

## Map 2.4 > Natural Areas

**Legend**

- Municipal Boundary
- Project Area Municipality
- Project Boundary
- Waterway
- Public Park
- Agricultural Security Area (ASA)
- Natural Heritage Area
- Road
- I-76/PA Turnpike
- US Route
- Major State Route
- Railroad

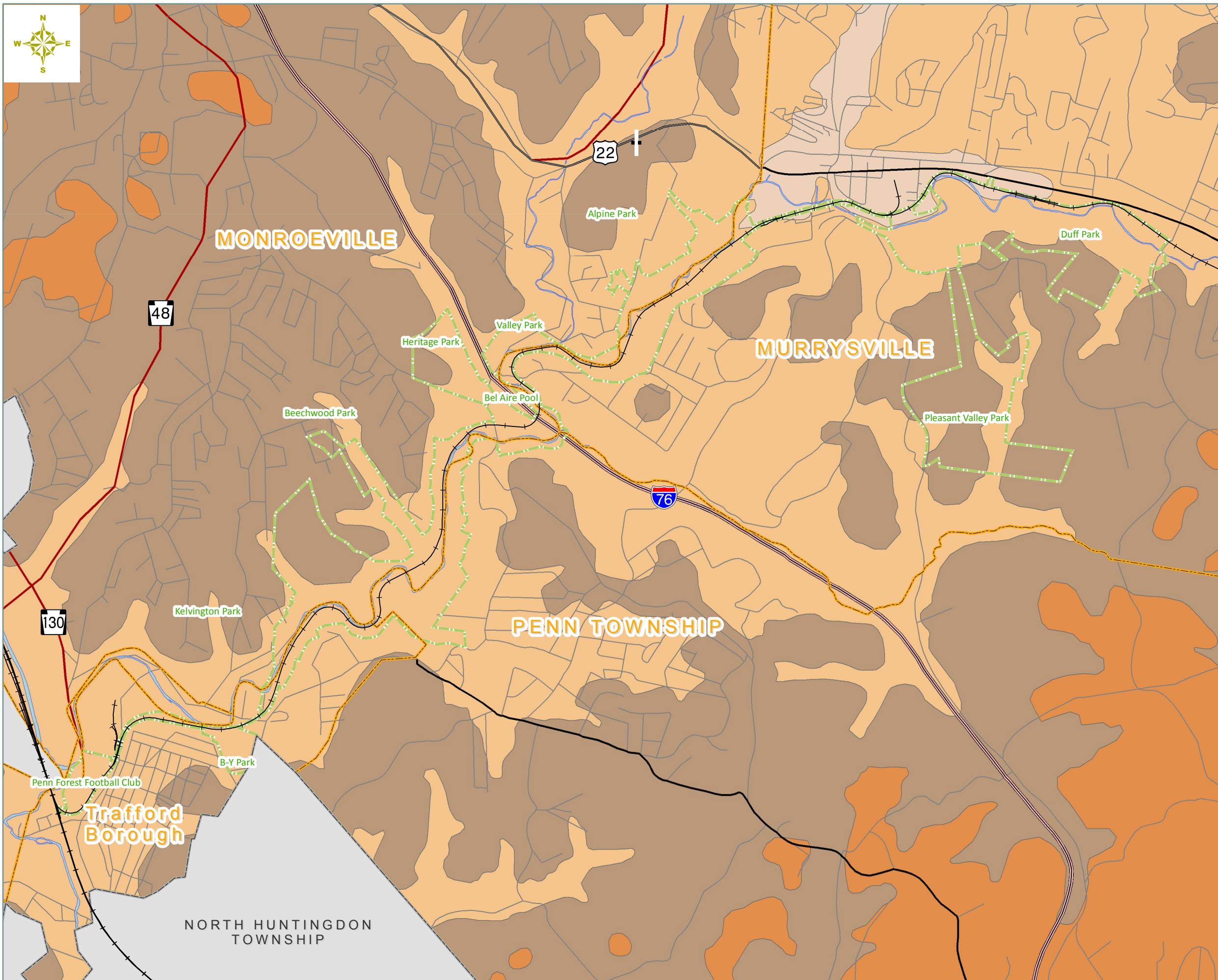
Data used is courtesy of PASDA, Allegheny County, Westmoreland County and PennDOT.

0 1,000 2,000 3,000 Feet



# Turtle Creek Greenway Plan

## Map 2.5 > Geology



**Legend**

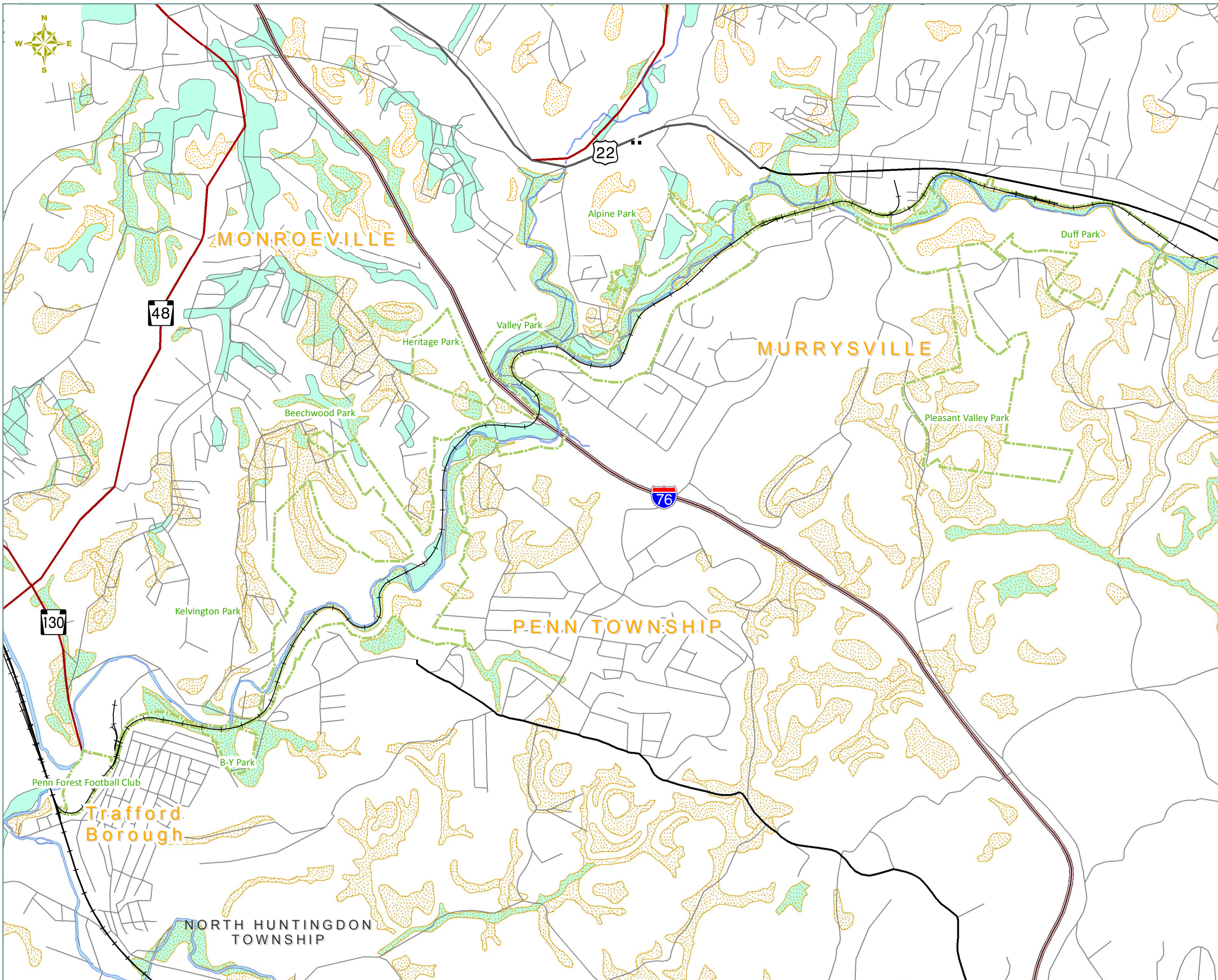
- Municipal Boundary
- Project Area Municipality
- Project Boundary
- Waterway
- Allegheny Formation
- Casselman Formation
- Glenshaw Formation
- Monongahela Formation
- Road
- I-76/PA Turnpike
- US Route
- Major State Route
- Railroad

Data used is courtesy of PASDA, Allegheny County, Westmoreland County and PennDOT.

0 1,000 2,000 3,000 Feet

# Turtle Creek Greenway Plan

## Map 2.6 > Soils

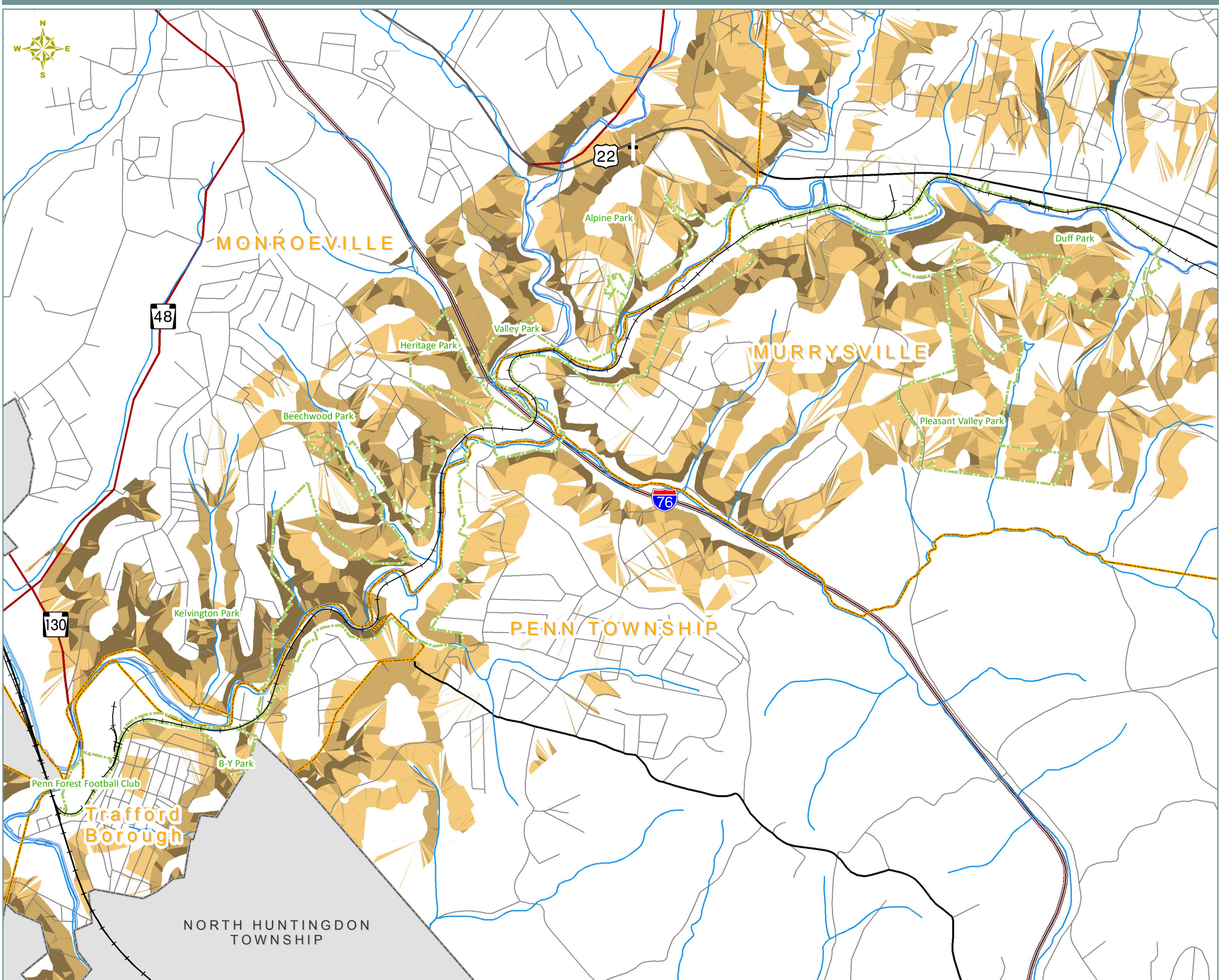


### Legend

- Project Boundary
- Waterway
- Prime Farmland Soils
- Hydric Soils
- Road
- I-76/PA Turnpike
- US Route
- Major State Route
- Railroad

Data used is courtesy of PASDA, Allegheny County, Westmoreland County and PennDOT.





# Turtle Creek Greenway Plan

## Map 2.7 > Steep Slopes

**Legend**

- Municipal Boundary
- Project Area Municipality
- Project Boundary
- Waterway

**Steep Slopes**

- >15-25%
- >25-40%
- >40%

- Road
- I-76/PA Turnpike
- US Route
- Major State Route
- Railroad

Data used is courtesy of PASDA, Allegheny County, Westmoreland County and PennDOT.

0 1,000 2,000 3,000 Feet